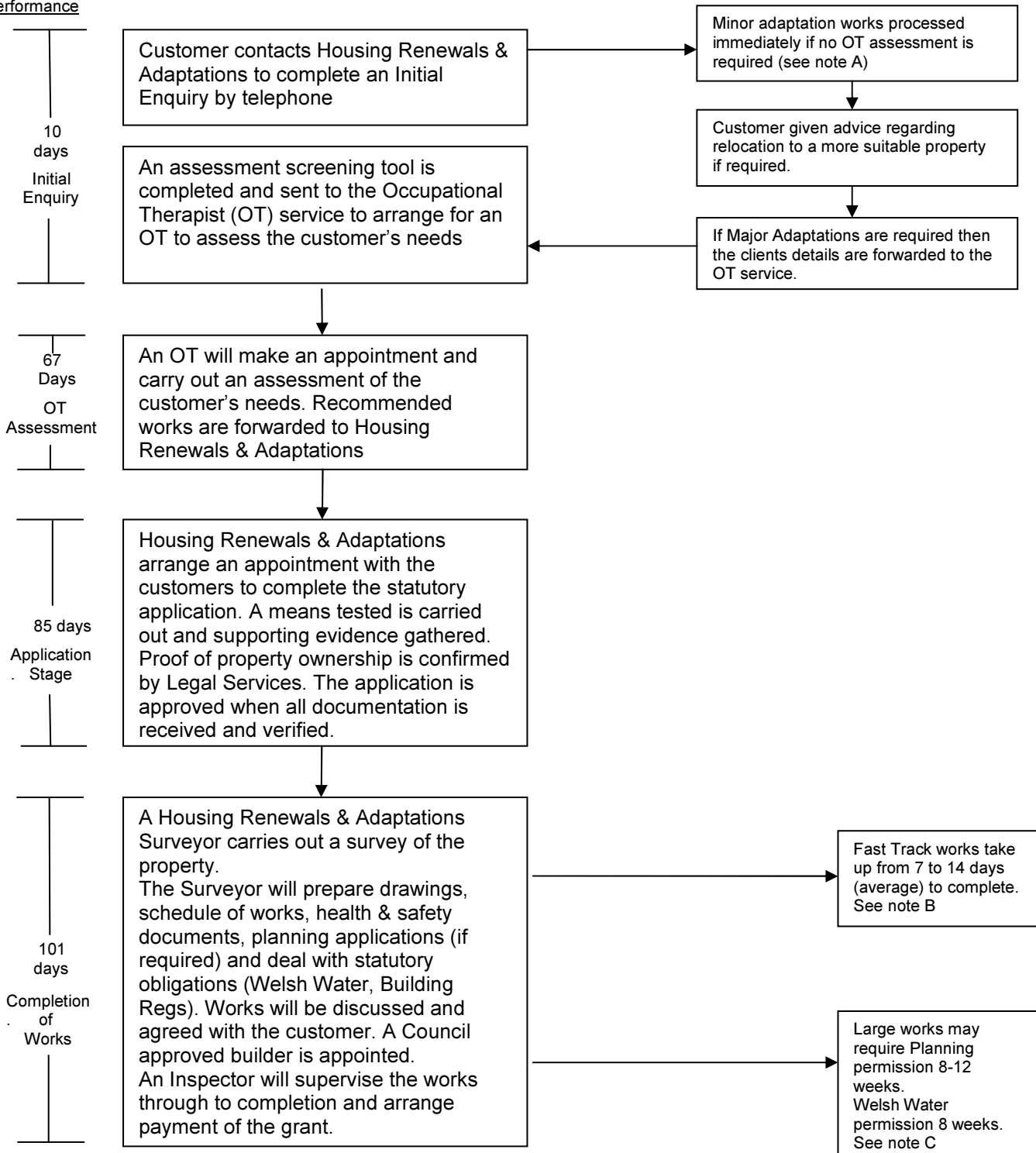


Stages of a Disabled Facilities Grant (DFG)

Average Time -
Based on 2013/14
performance



**Total 263 days
2013/14 Average**

Note: A: Minor Adaptations - Grabrails, Handrails, lever
Taps, voice entry, door bell, repositioning radiators, power points.
B: Fast Track works - Bathroom adaptations, ramping, handrail,
Galvanised railing, disabled kitchen adaptations, heating, hardstandings,
stairlift, small works.
C: Large Adaptations works - Bedroom extensions, Bathroom
extensions, W.C. extensions, attic conversions, door widening, internal
improvements, through floor lifts, external lifts, major works.